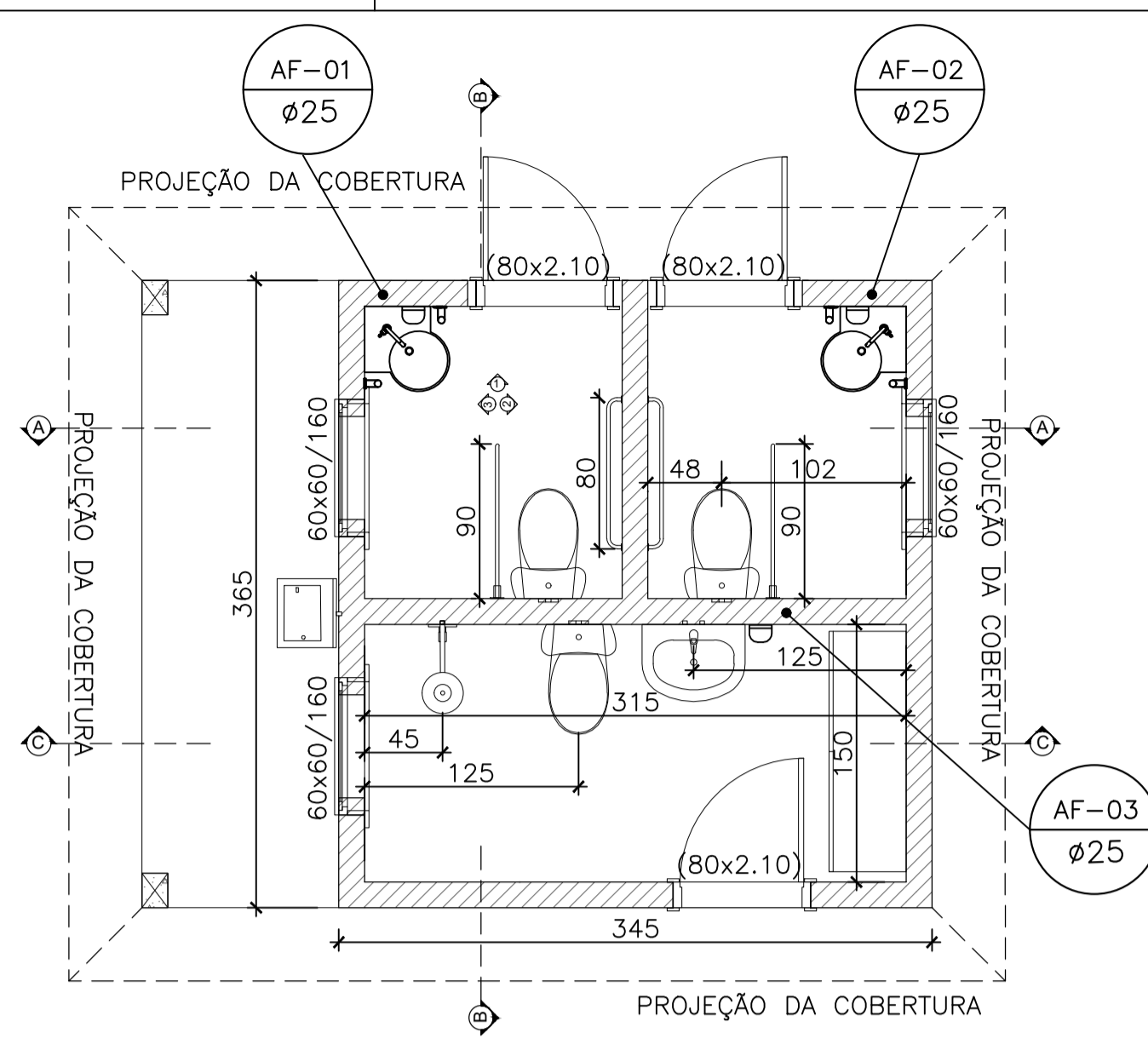


PLANTA BAIXA - ÁREA TOTAL 16,80 m²
ESCALA 1 : 50



PLANTA LAYOUT - TÉRREO
ESCALA 1 : 50

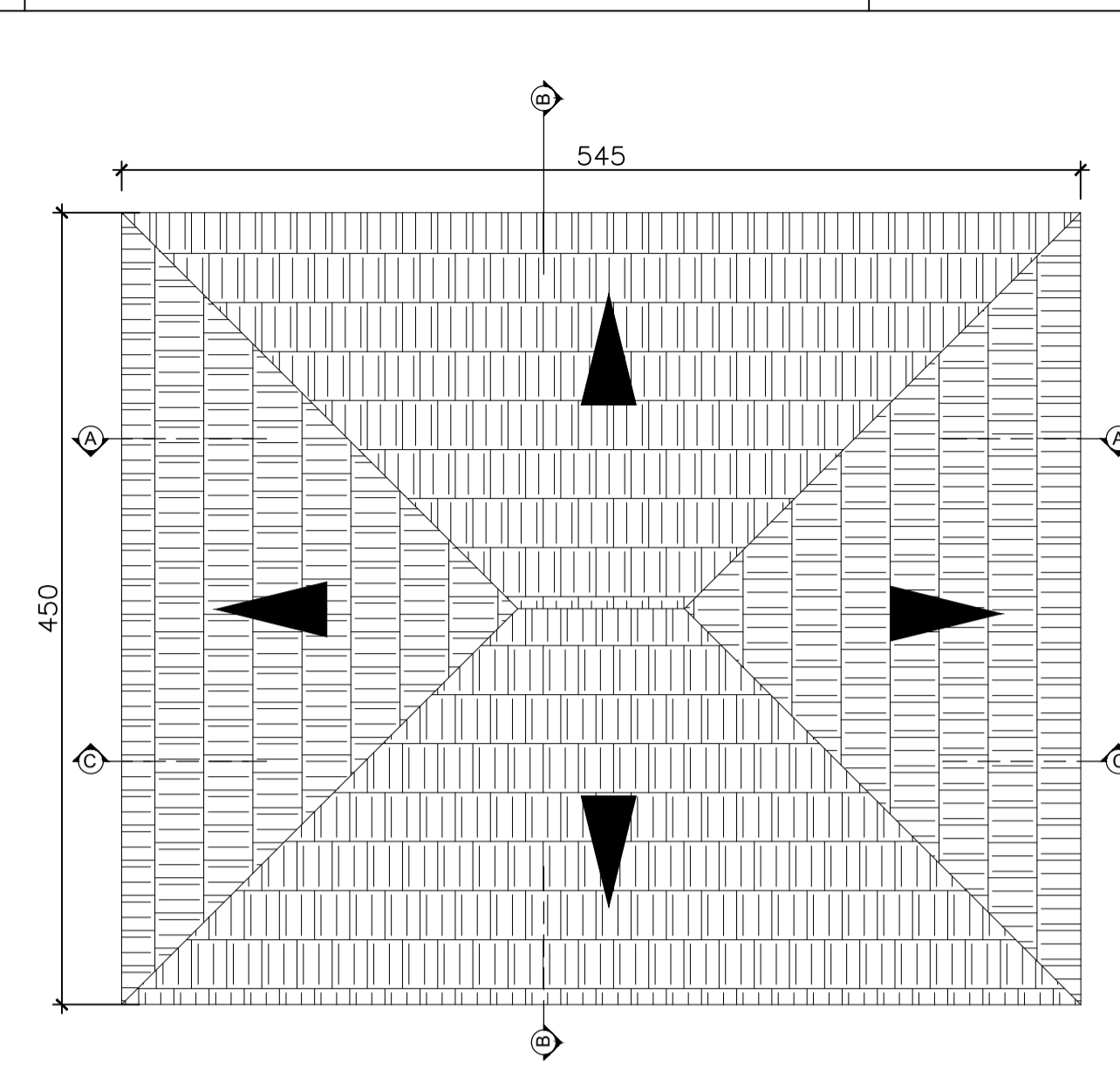
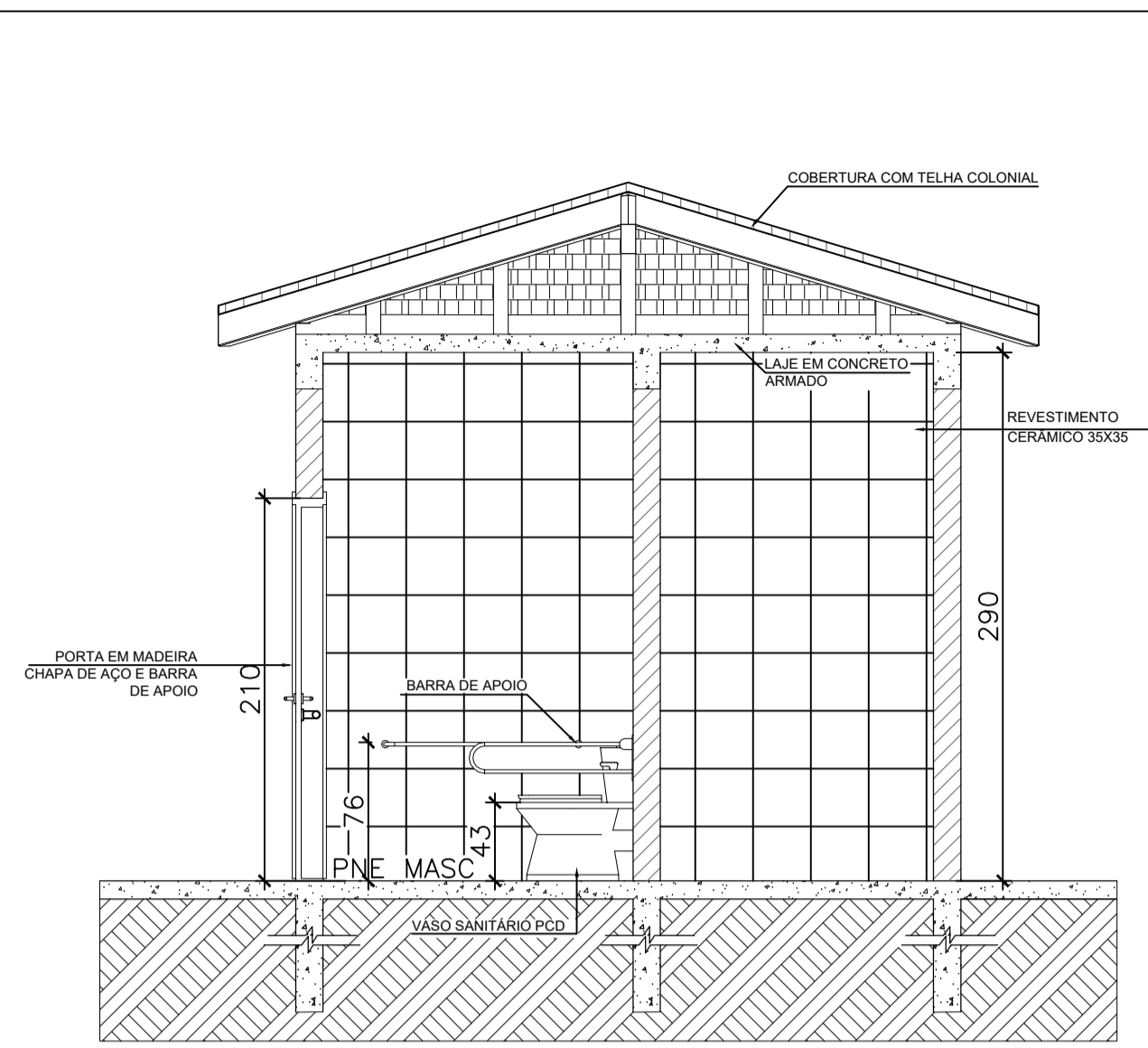
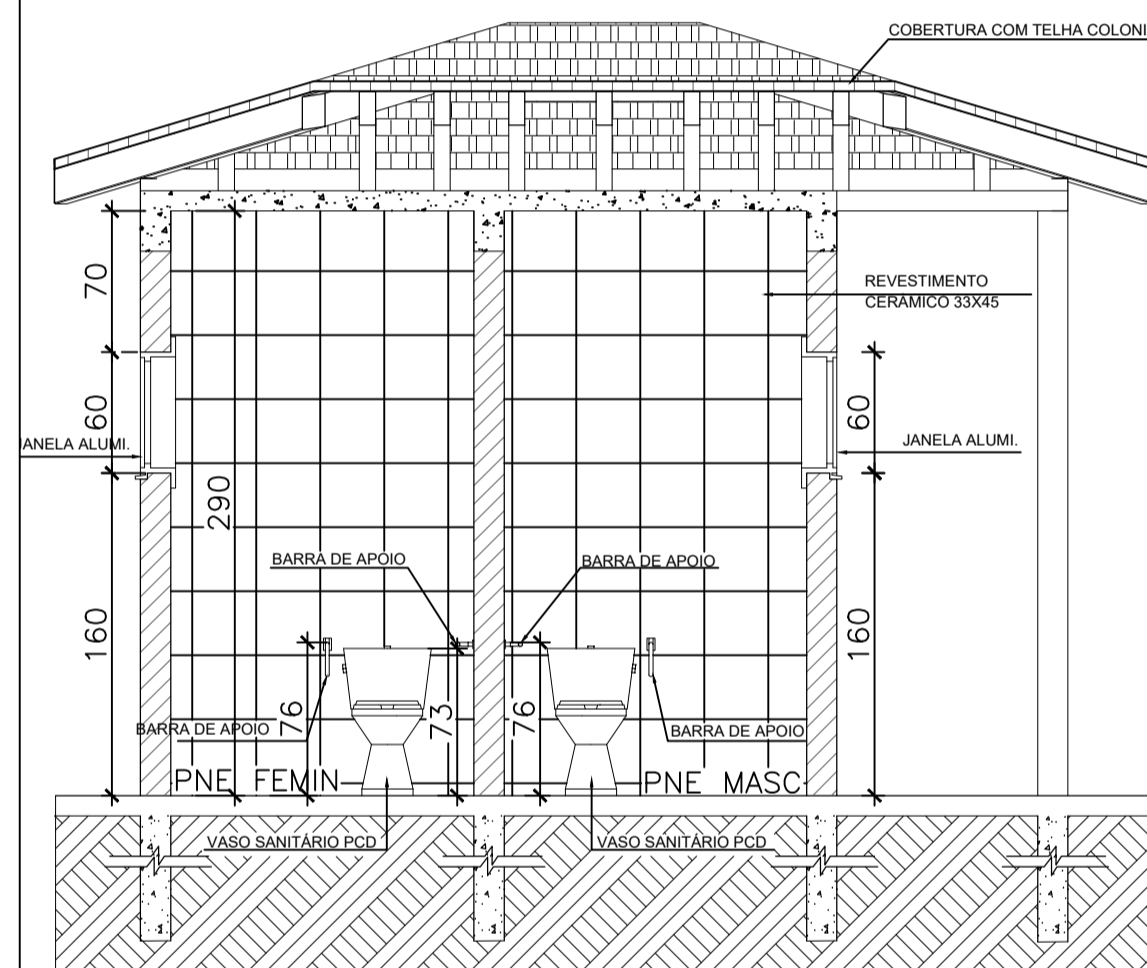


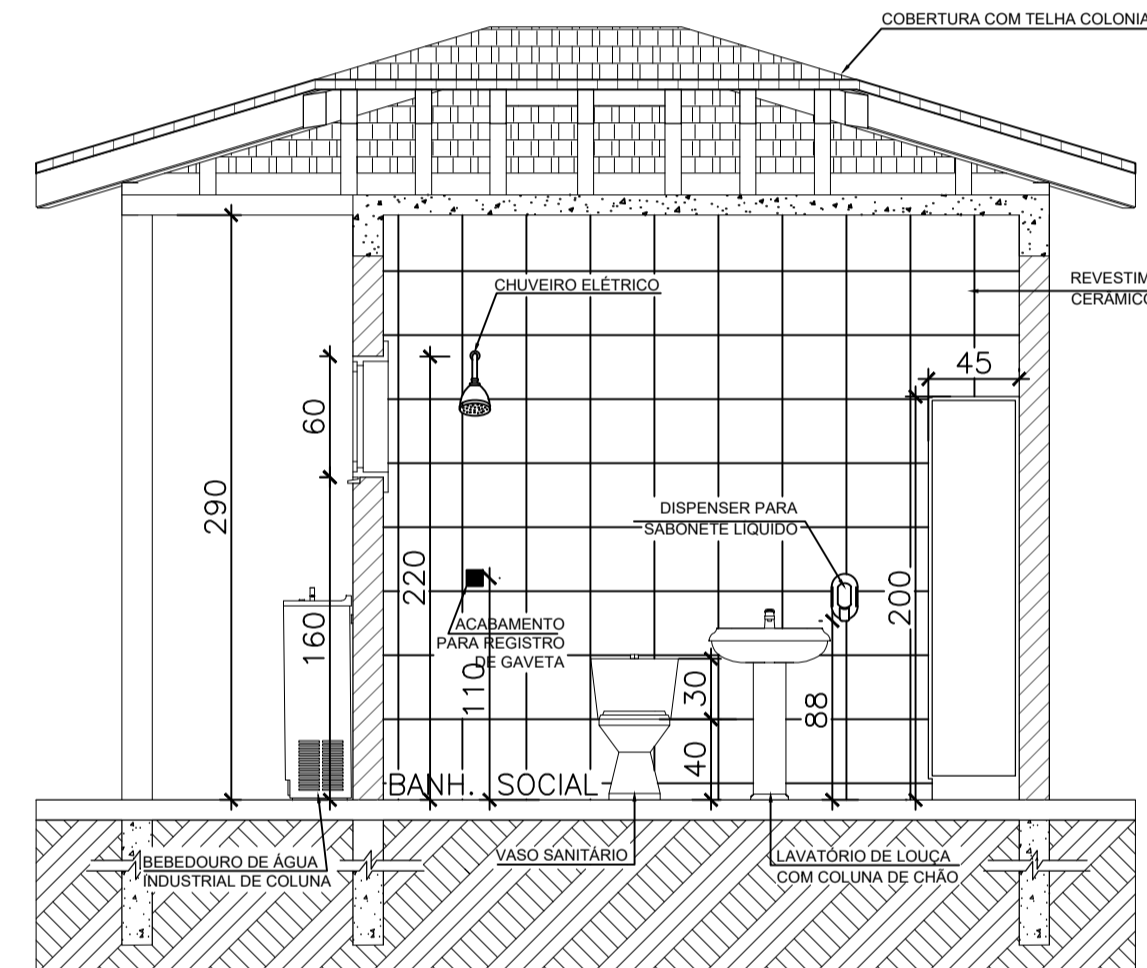
DIAGRAMA DE COBERTURA. INCLINAÇÃO 30%
ESCALA 1 : 50



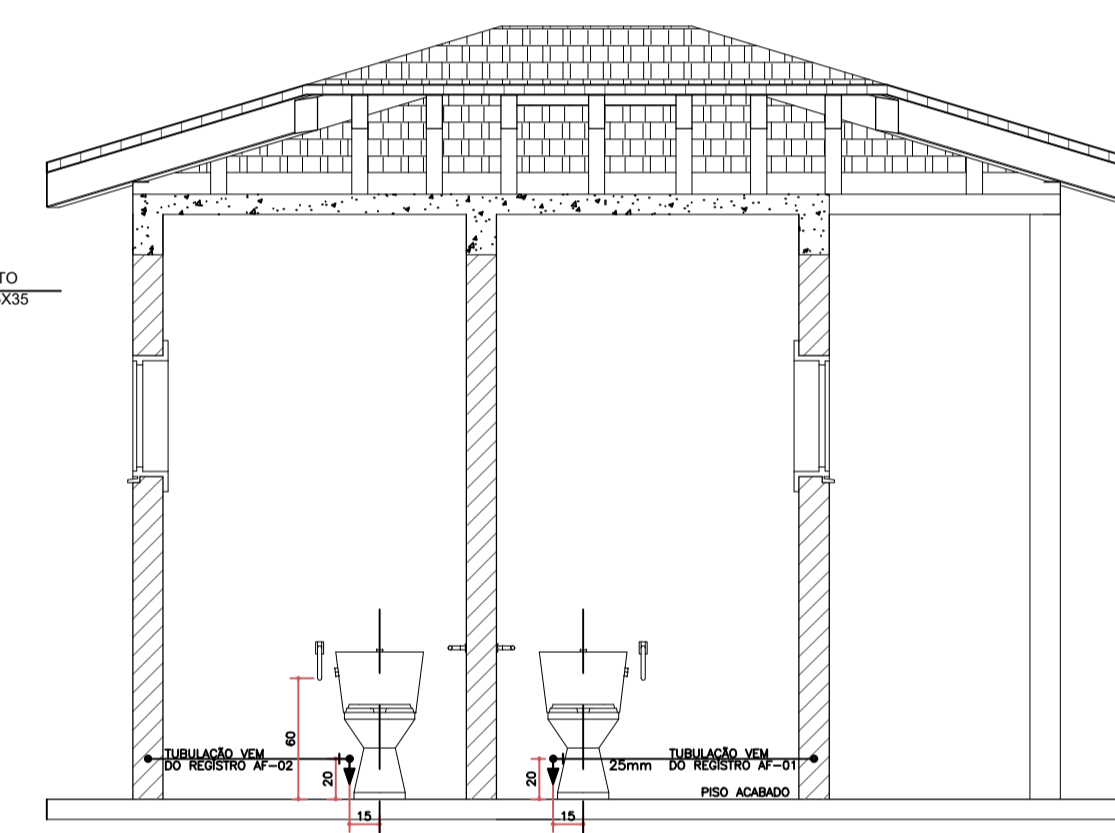
CORTE BB
ESCALA 1 : 50



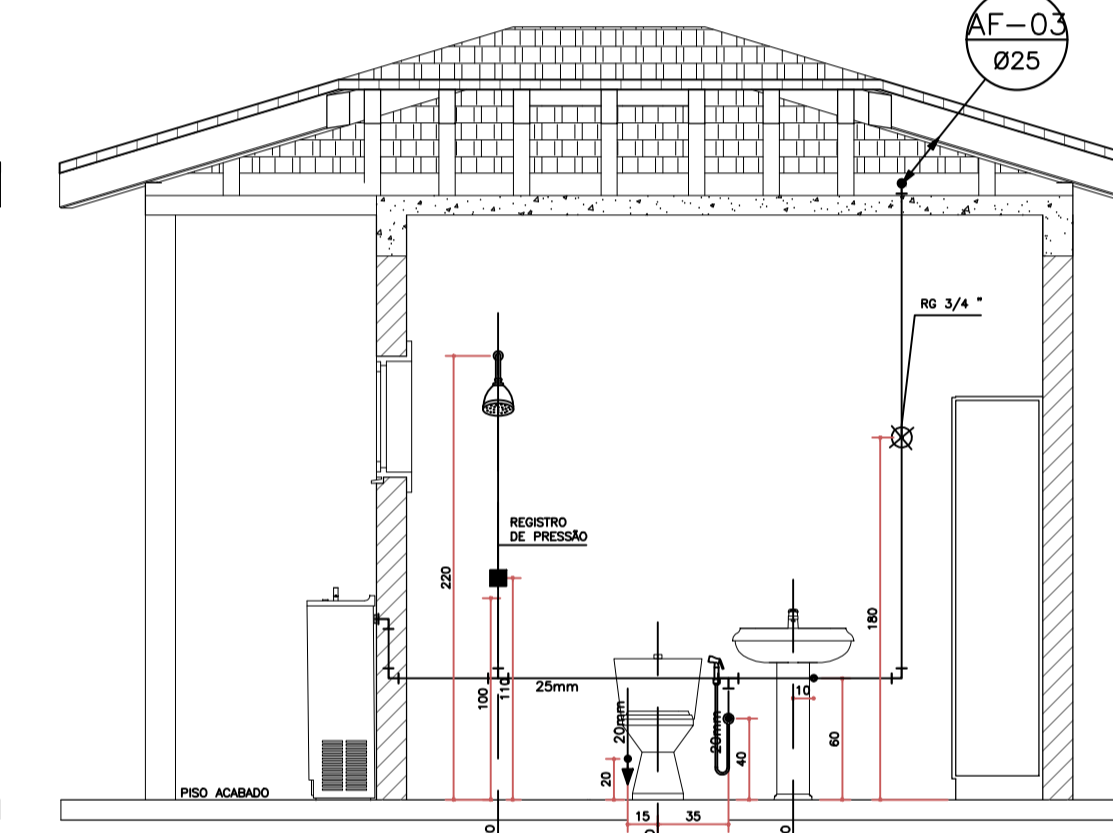
CORTE AA
ESCALA 1 : 50



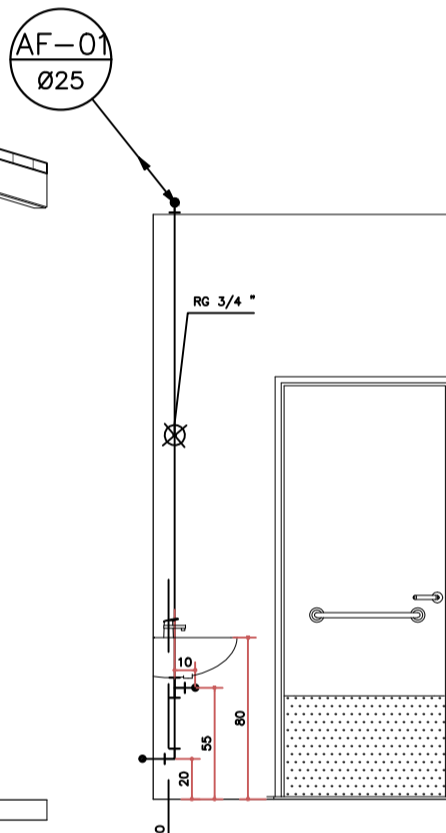
CORTE CC
ESCALA 1 : 50



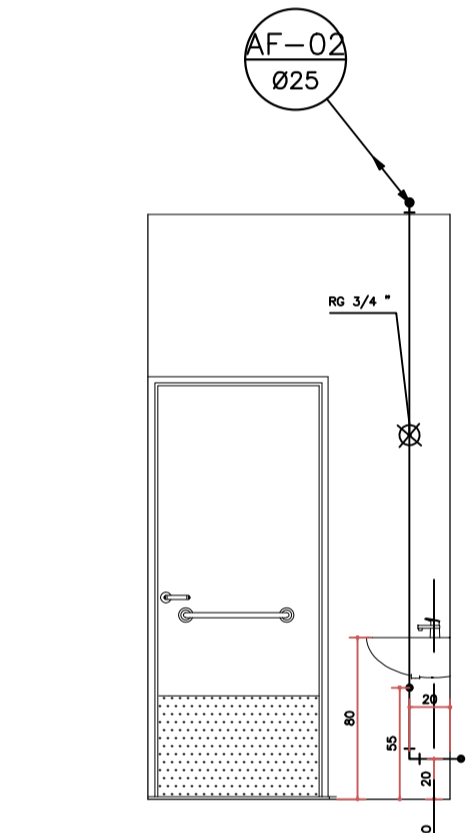
DETALH. HIDR. CORTE AA
ESCALA 1 : 50



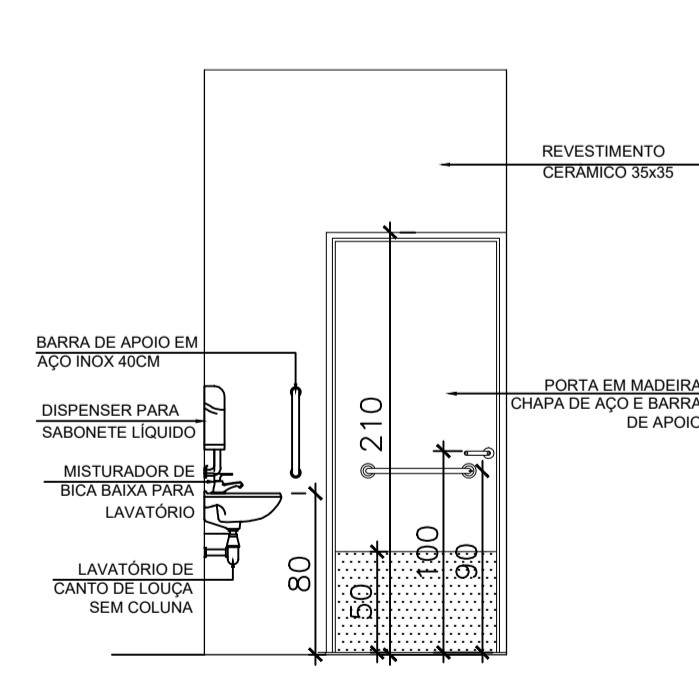
DETALH. HIDR. CORTE BB
ESCALA 1 : 50



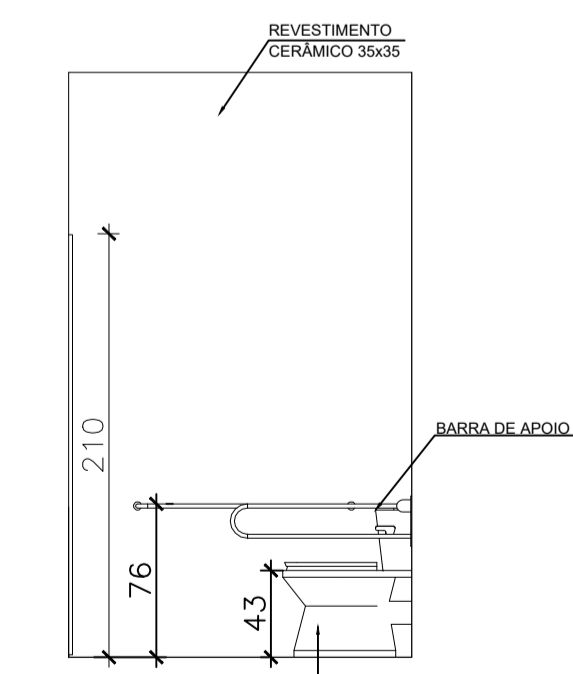
PNE MASC.
ESCALA 1 : 50



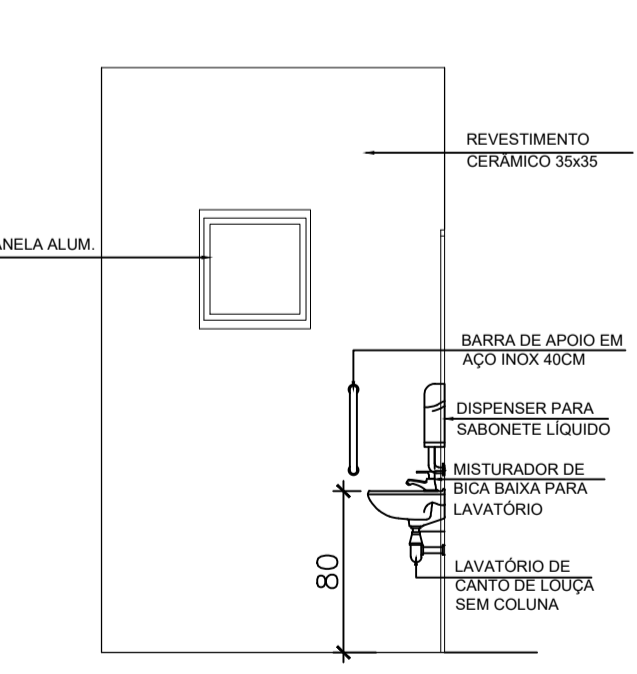
PNE FEMIN.
ESCALA 1 : 50



VISTA 1 PNE
ESCALA 1 : 50



VISTA 2 PNE
ESCALA 1 : 50



VISTA 3 PNE
ESCALA 1 : 50

PROJETO – SANITÁRIOS

ENDEREÇO:	CEMITÉRIO – SANTO ANTONIO DO GRAMA
PROPRIETÁRIO:	PREFEITURA MUNICIPAL DE SANTO ANTONIO DO GRAMA
AUTOR DO PROJETO:	PEDRO MARTINO ZEFERINO
RESPONSÁVEL TÉCNICO:	PEDRO MARTINO ZEFERINO – ENG.CIVIL – CREMAG 137.103/D

PREFEITURA MUNICIPAL DE SANTO ANTONIO DO GRAMA

RESO. TÉCNICO – PEDRO MARTINO ZEFERINO – ENG.CIVIL – CREMAG 137.103/D

PROJETO ARQUITETÔNICO

DESENHO N°:	FASE DO PROJETO	REVISÃO			
01/01	PLANTA BAIXA – PLANTA COBERTURA CORTES AA, BB E CC PLANTA DE PONTOS HIDRAULICOS	0			
	MAR/2022	INDICADA	–		
	DATA	ESCALA	DESENHISTA	VISTO	DWG